

Providence R.I.
This plat accompanies
our report of this date.

PLAT OF
BEACON STREET

FROM BROAD ST. TO FRIENDSHIP ST.

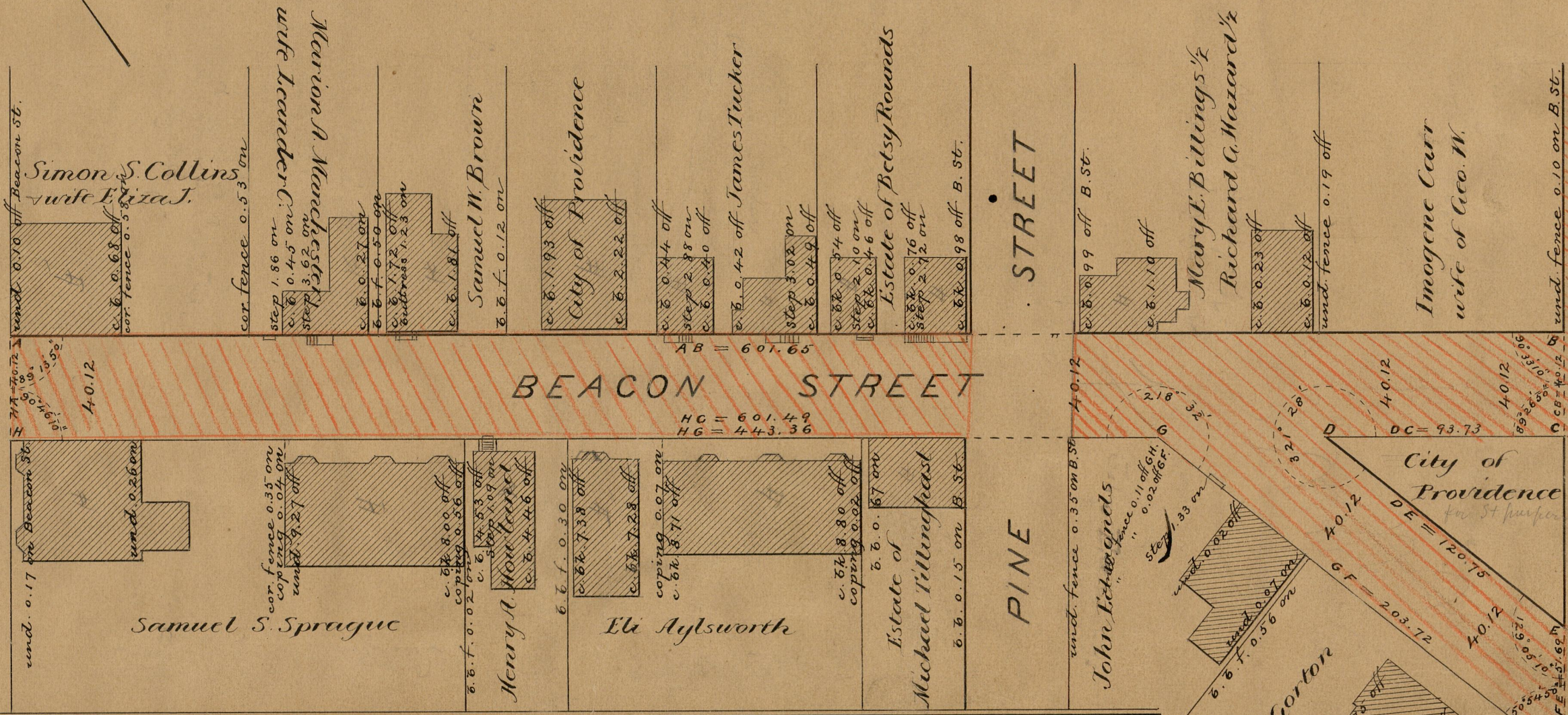
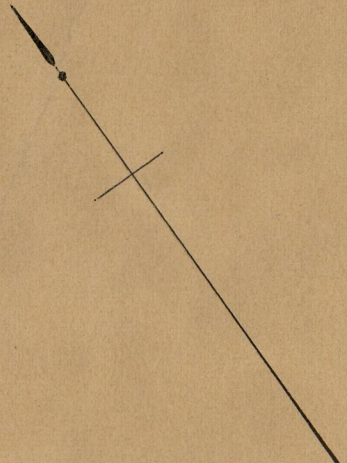
SCALE 50 FEET PER INCH.

731.60

Changed to Beacon Ave. Oct. 31, 1889.

F.B.R.T. 21
PROVIDENCE, R. I.
STREET LINE DEPT.
Mar. 27, 1889
014834

BROAD STREET



OFFICE No. 9987
DRAWER " 83
SHEET " B-74

83
B-74